

STADT BIEL

---

ALIGNEMENTSABÄNDERUNG  
**BEIM STADTPARK**

Dufourstrasse - Stadtpark

SITUATION 1:500

Vom Regierungsrate genehmigt,  
 unter Vorbehalt von Drittmannsrechten.

BERN, den *24 Juni 1956*

Im Namen des Regierungsrates

Der Präsident:

Der Staatschreiber: *L. V.*



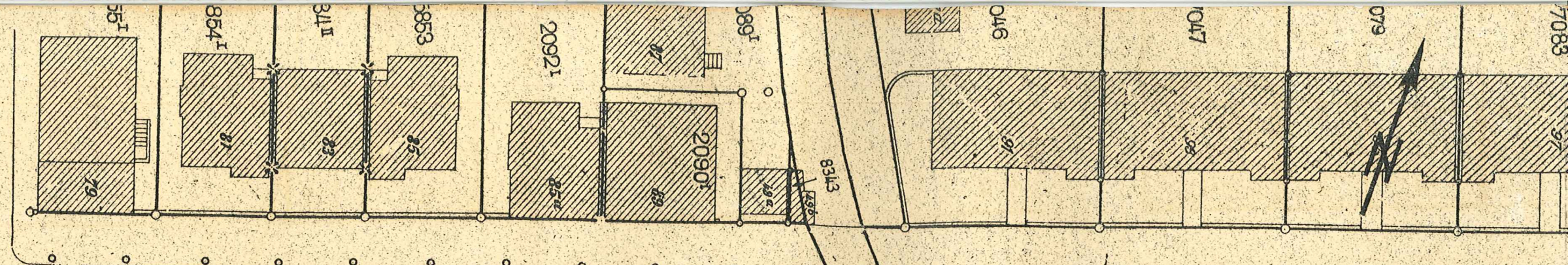
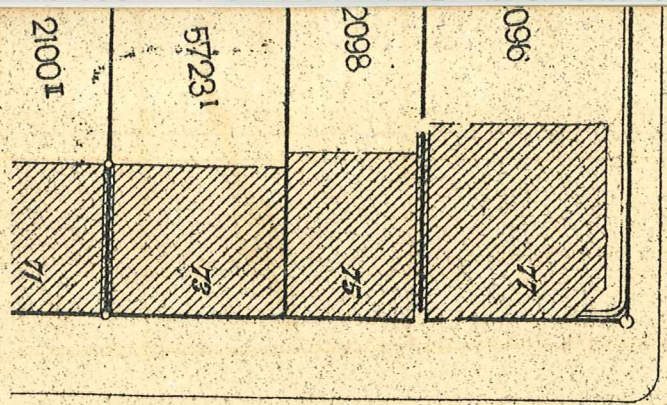
*Müller*

*E. Kreyer*

TIEFBAUAMT BIEL  
*Abteilung Alignementswesen*  
 der Städtingenieur:

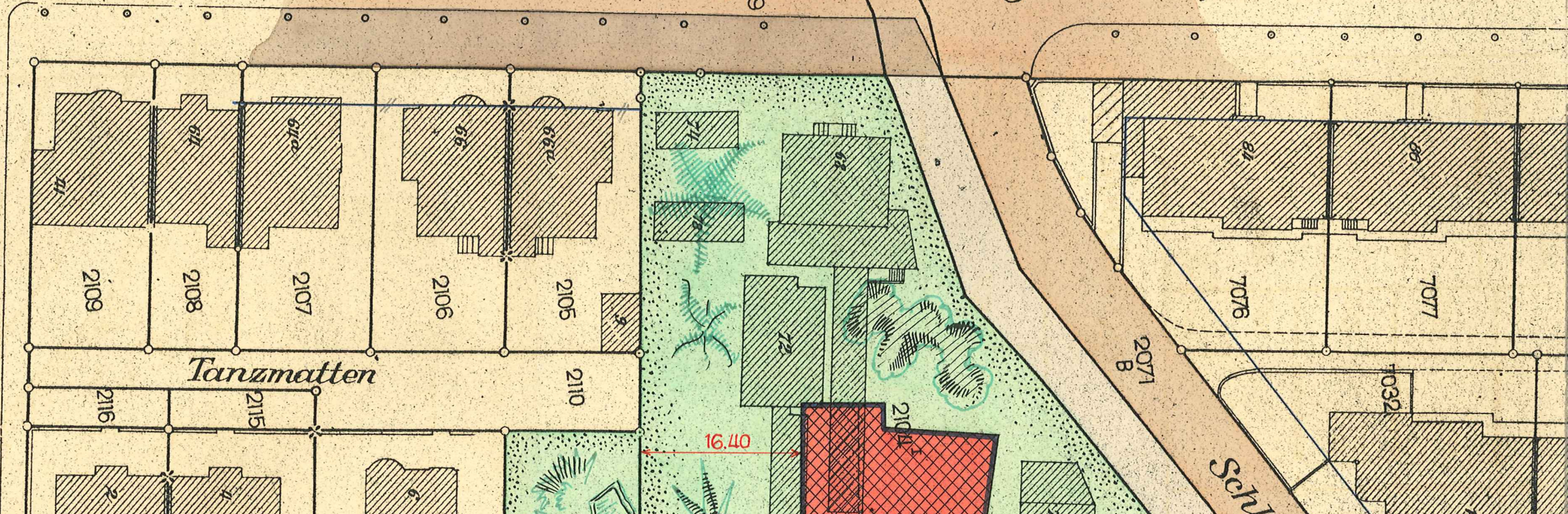
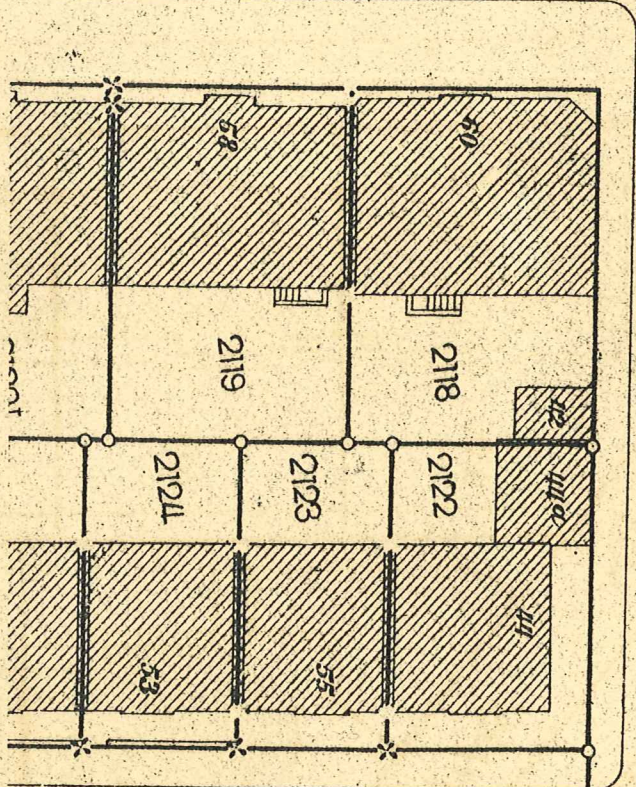
*J. Müller*





Dufour-Str.

Dufour-Str.

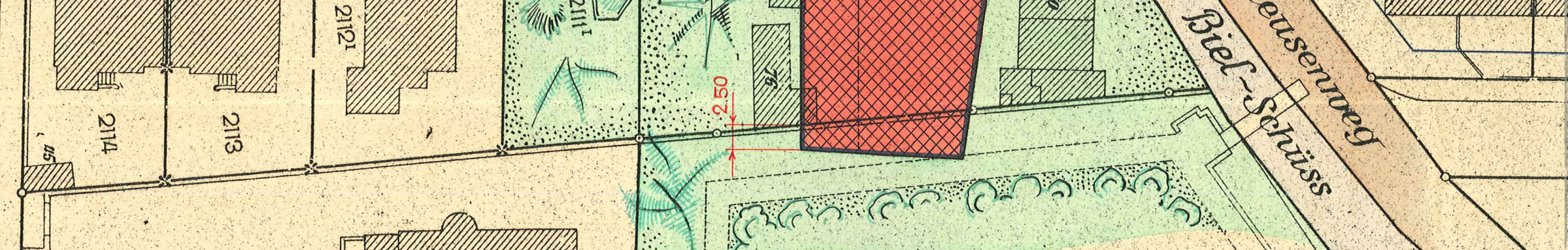
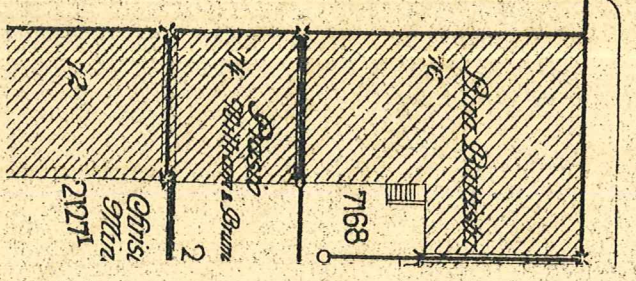


chüler-Str.

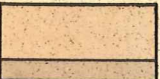



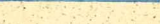
Rubenberg-Str.

Tanzmatten

Schlesenerweg  
Biel-Schüss



LEGENDE

-  Fährbahn
-  Trottoir
-  Hochhaus-Zone (15 Geschosse + 1 Attikagesch.)
-  Grünzone (teils Stadtpark)
-  genehmigte Baulinie

Tierbauamt Biel  
Abteilung Alignementwesen  
21.6.16

Stadtpark